



Cambridge International AS & A Level

DESIGN & TECHNOLOGY

9705/13

Paper 1

October/November 2023

3 hours



You must answer on the answer booklet/paper.

You will need: Answer booklet/A4 paper Coloured pencils
A3 drawing paper (2 sheets) Extra sheets of A3 drawing paper if needed
A range of design drawing equipment

INSTRUCTIONS

- Answer **three** questions in total:
 - Section A: answer **one** question on the answer booklet/A4 paper provided.
 - Section B: answer **one** question on the answer booklet/A4 paper provided.
 - Section C: answer **one** question on A3 drawing paper. Use both sides of the paper.
- You may request additional sheets of A3 drawing paper, but only if you have used up both sides of each of the 2 sheets provided.
- If you have been given an answer booklet, follow the instructions on the front cover of the answer booklet.
- Use a black or dark blue pen.
- Write your name, centre number and candidate number on all the work you hand in.
- Do **not** use an erasable pen or correction fluid.
- You may use an HB pencil, or coloured pencils as appropriate, for any diagrams, graphs or rough working.
- At the end of the examination, fasten all your work together. Do **not** use staples, paper clips or glue.

INFORMATION

- The total mark for this paper is 120.
- The number of marks for each question or part question is shown in brackets [].
- All dimensions are in millimetres.

This document has **12** pages. Any blank pages are indicated.

Section A

Answer **one** question from this section on the Answer Booklet/A4 paper provided.

- 1 Fig. 1.1 gives details of a teaching aid which is to be made in a school workshop.

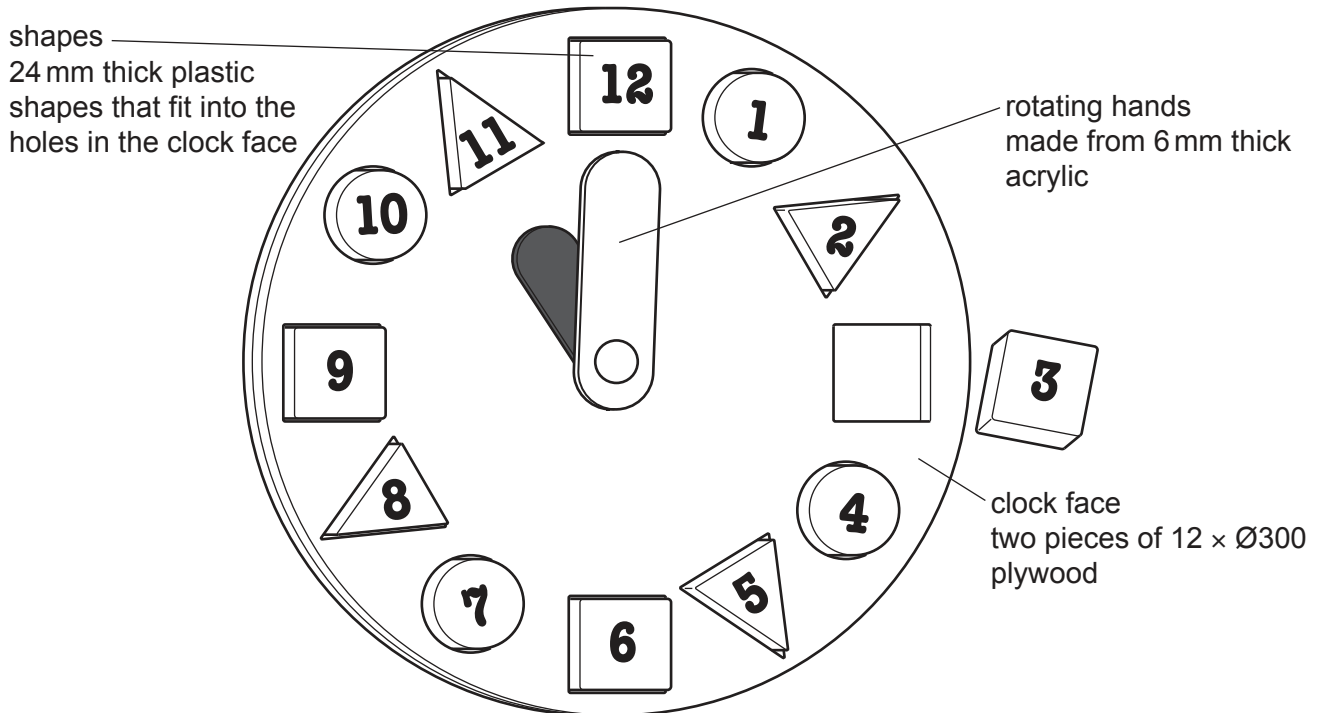


Fig. 1.1

- (a) Use a sketch and notes to show how the rotating hands could be attached to the clock face. [2]
- (b) Use notes and sketches to describe:
- (i) a method of making the clock face [6]
 - (ii) a method of making and applying the numbers to the plastic shapes. [6]
- You must give details about the tools, equipment and processes involved and the safety precautions that have to be undertaken at each stage.
- (c) Use notes and sketches to show a method of making a batch of 2000 of **one** of the plastic shapes. [6]

2 Fig. 2.1 gives details of a coffee table which is to be made in a school workshop.

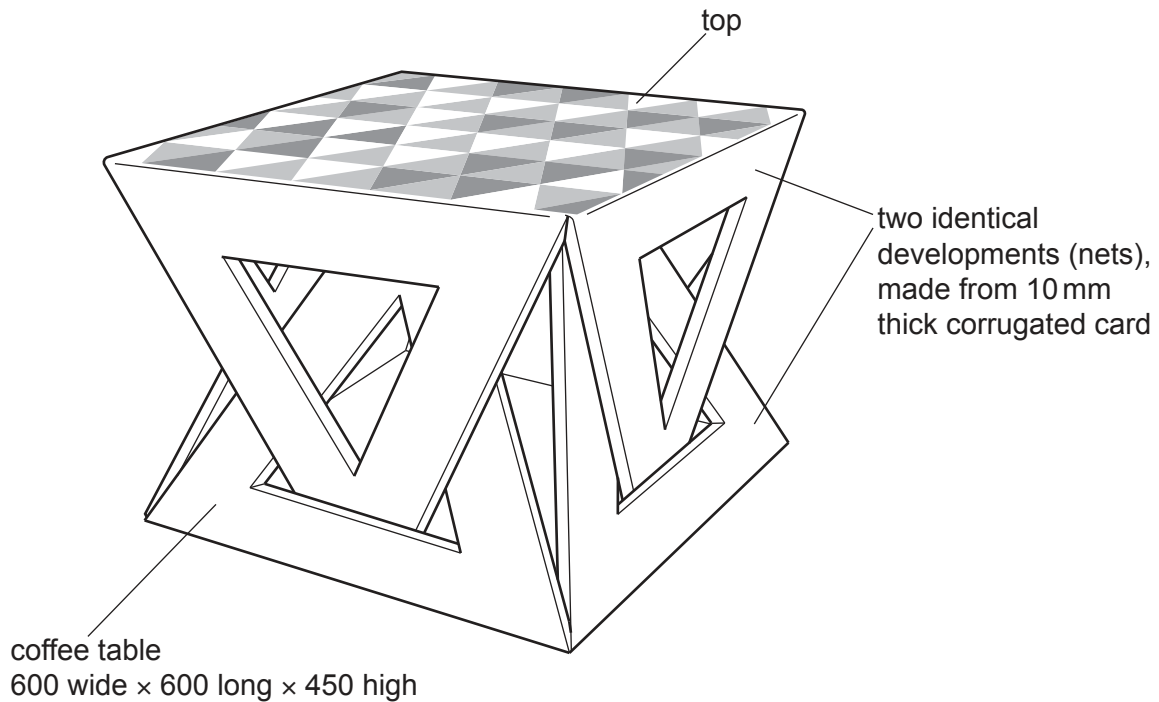


Fig. 2.1

- (a) Give **two** reasons why corrugated card is a suitable material for the coffee table. [2]
- (b) Use notes and sketches to show the shape of **one** of the developments (nets) required to make the coffee table. [6]
- (c) Use notes and sketches to describe:
 - (i) how to make the **two** identical shaped developments (nets) that are required to form the coffee table [6]
 - (ii) a method of creating and waterproofing the design on the top of the coffee table. [6]

You must give details about the tools, equipment and processes involved and the safety precautions that have to be undertaken at each stage.

3 Fig. 3.1 gives details of a food mincer which is used in a school kitchen.

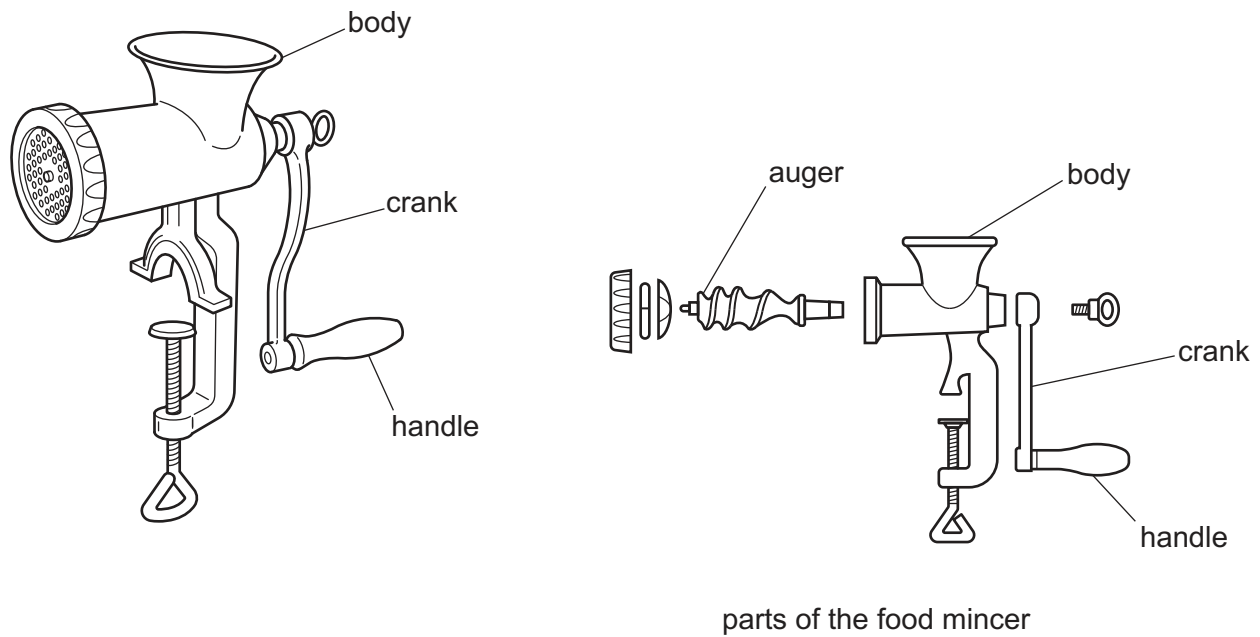


Fig. 3.1

(a) Give **two** reasons why the food mincer is designed to be taken apart. [2]

(b) Use notes and sketches to describe a method of making the handle. [6]

You must give details about the tools, equipment and processes involved and the safety precautions that have to be undertaken at each stage.

(c) Use sketches and notes to describe:

(i) the action of the auger in the food mincer [6]

(ii) how the length of the crank impacts upon the user. [6]

Section B

Answer **one** question from this section on the Answer Booklet/A4 paper provided.

- 4 Fig. 4.1 gives details of an incomplete design for a sunshade. The canopy hangs from the mild steel frame.

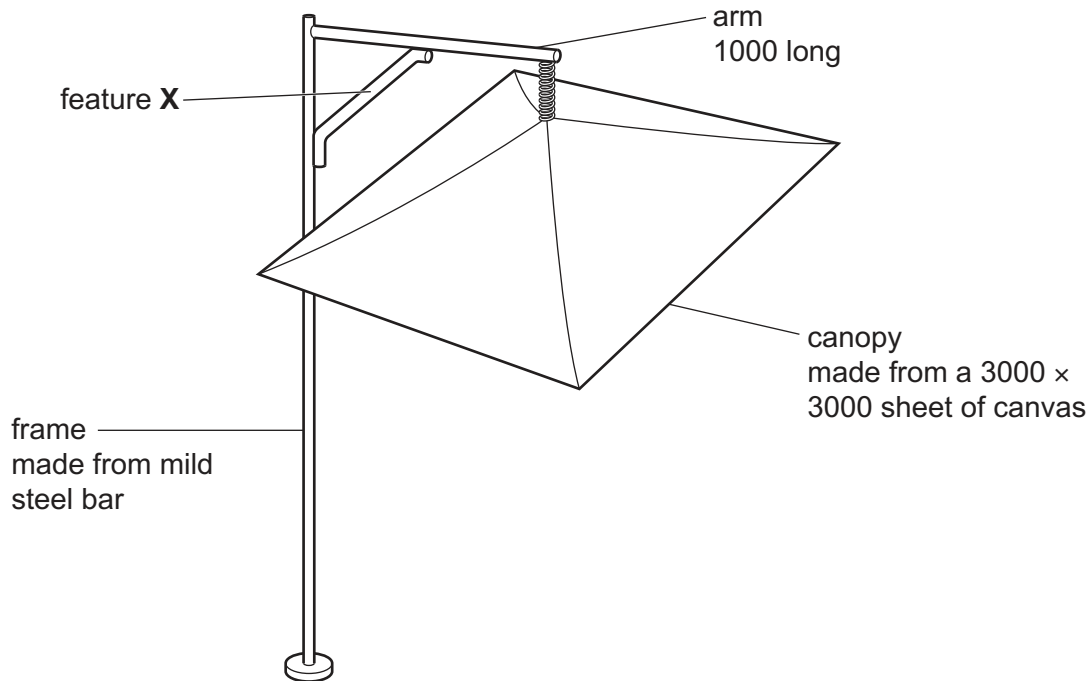


Fig. 4.1

- (a) Explain the function of the design feature shown at **X**. [2]
- (b) Identify and describe **two** problems with the sunshade. [4]
- (c) Use notes and sketches to explain how the design of the sunshade would need to be changed to overcome the **two** problems you have identified in **part (b)**. [6]
- (d) Discuss why manufacturers of products, such as the sunshade, must undertake risk assessments on all manufacturing processes. Your answer should:
- (i) analyse the given situation and identify **three** relevant issues raised by the question [3]
 - (ii) explain why you consider these issues to be relevant [3]
 - (iii) contain specific examples/evidence to support your conclusions. [2]

- 5 Fig. 5.1 gives details of incomplete packaging for a birthday cake. The packaging consists of a box that slides into an outer sleeve.

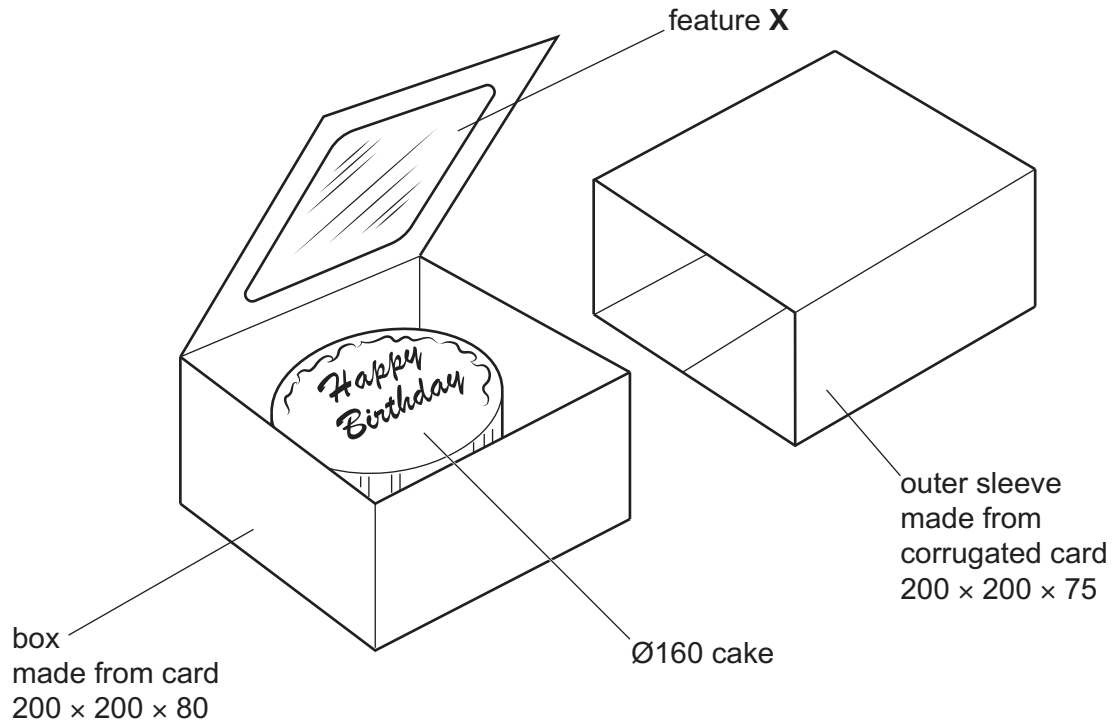


Fig. 5.1

- (a) Explain the function of the design feature shown at **X**. [2]
- (b) Identify and describe **two** problems that make the packaging for the birthday cake unsuitable for use. [4]
- (c) Use notes and sketches to explain modifications to the packaging to overcome the **two** problems you have identified in **part (b)**. [6]
- (d) Discuss why designers of packaging, such as used for the birthday cake, consider the protection of products important. Your answer should:
- (i) analyse the given situation and identify **three** relevant issues raised by the question [3]
 - (ii) explain why you consider these issues to be relevant [3]
 - (iii) contain specific examples/evidence to support your conclusions. [2]

- 6 Fig. 6.1 gives details of an incomplete design for a lamp that is fastened to a house wall. The lamp is powered by mains electricity and detects movement.

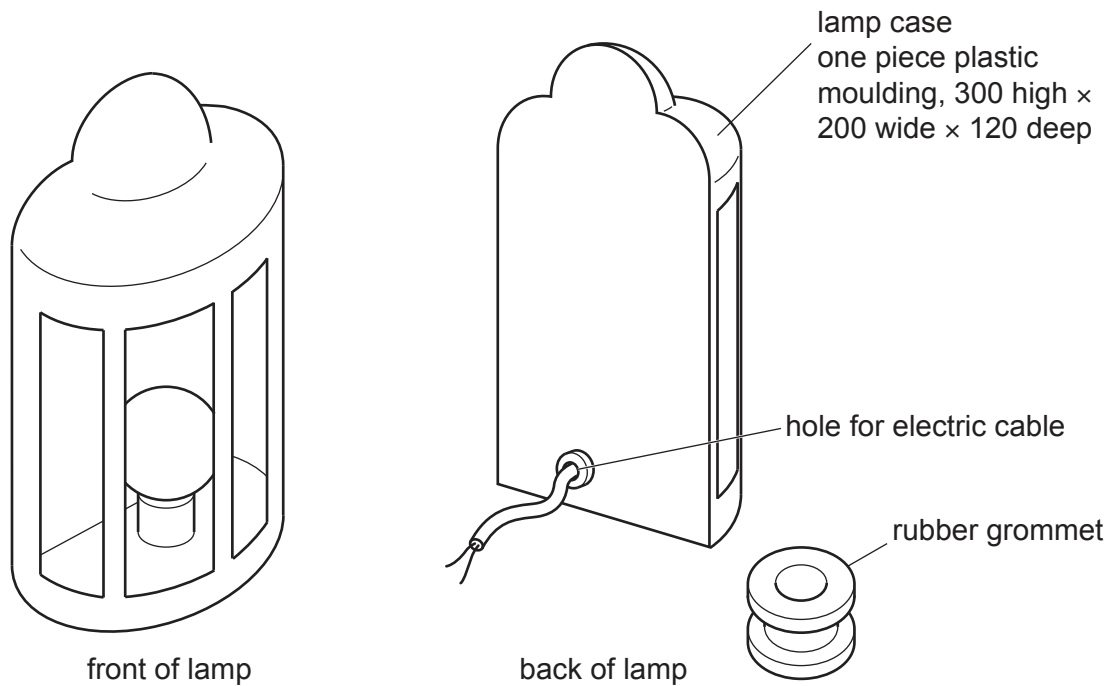


Fig. 6.1

- (a) Explain why a rubber grommet is used in the hole for the electric cable. [2]
- (b) Identify and describe **two** problems with the lamp. [4]
- (c) Use notes and sketches to explain how the lamp would need to be changed to overcome the **two** problems you have identified in **part (b)**. [6]
- (d) Discuss how mass-production methods impact on the people involved. Your answer should:
- (i) analyse the given situation and identify **three** relevant issues raised by the question [3]
 - (ii) explain why you consider these issues to be relevant [3]
 - (iii) contain specific examples/evidence to support your conclusions. [2]

Section C

Answer **one** question from this section on the plain A3 paper provided.

You are provided with two sheets of plain A3 paper. You should use **both** sides of the paper. **Each** of the four parts **(a) – (d)** of the question you choose to answer should take up one side of paper.

When you are asked to **develop** a design you must show, using notes and sketches, the development and evaluation of a **range** of ideas into a single design solution. The design proposal should be annotated to give details about materials, joining methods and important sizes.

7 Fig. 7.1 shows an incomplete design for a mirror stand.

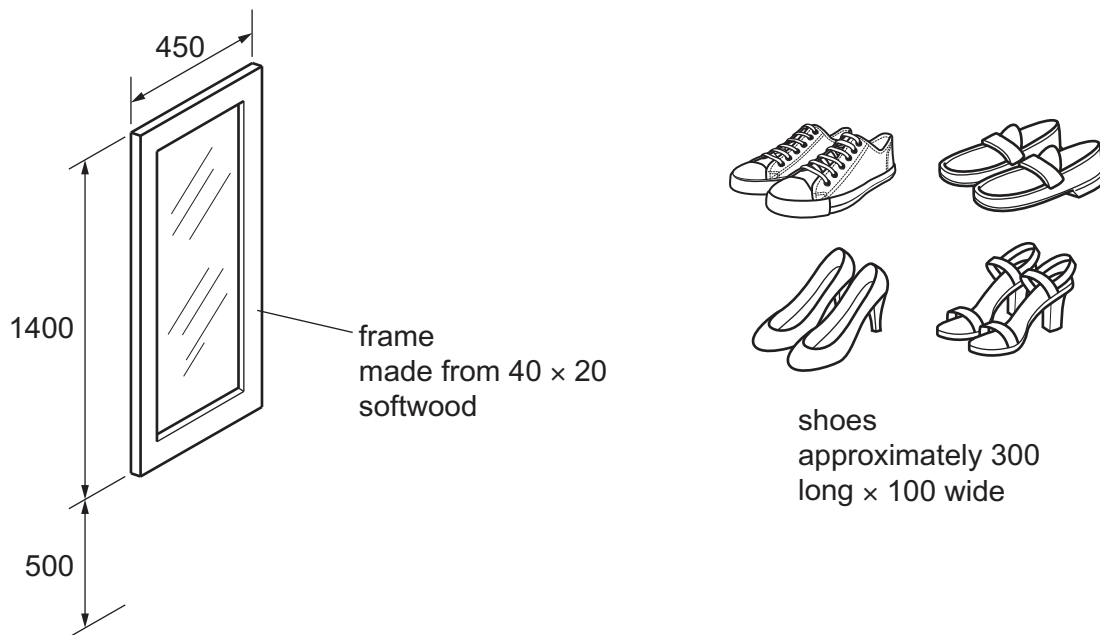


Fig. 7.1

- (a) Use notes and sketches to **develop** a design for a stand for the mirror. The stand must hold the bottom of the mirror 500 mm above the floor. [20]
- (b) Use notes and sketches to **develop** a design for a method that allows the angle of the mirror to be adjusted and attaches to the stand designed in **part (a)**. [20]
- (c) Use notes and sketches to **develop** a design for a shoe rack that attaches to the stand designed in **part (a)**. The rack must hold four pairs of shoes. [20]
- (d) Produce a pictorial (3D) rendered drawing of the complete mirror stand which shows all of the features that you have designed in **parts (a) – (c)**. [20]

- 8 Fig. 8.1 shows four shapes that could form the basis of a design for a freestanding slot-together robot to be used to promote a film called 'Robot Heroes'.

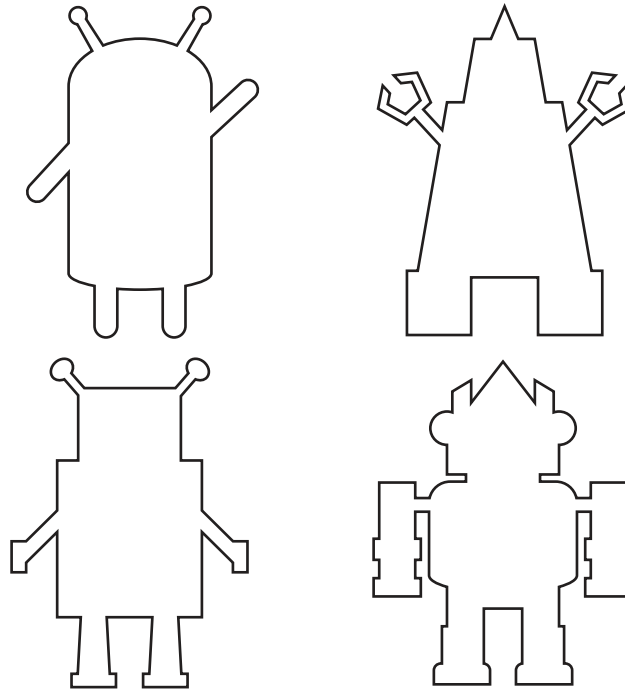


Fig. 8.1

- (a) Use notes and sketches to **develop** a design for a freestanding slot-together robot. The robot should be 1000mm high and have a minimum of four parts made from 10mm foamboard. [20]
- (b) Use notes and sketches to **develop** a design for a set of stickers to be applied to the robot you designed in **part (a)**. The stickers must show the key facial features of the 'Robot Heroes'. [20]
- (c) Use notes and sketches to **develop** a design for an A5 leaflet holder for promotional materials that will be attached to the robot you designed in **part (a)**. [20]
- (d) Produce a pictorial (3D) rendered drawing of the fully assembled robot which shows all of the features that you have designed in **parts (a) – (c)**. [20]

9 Fig. 9.1 shows an incomplete design for a model of a stage set made from 15 mm thick plywood.

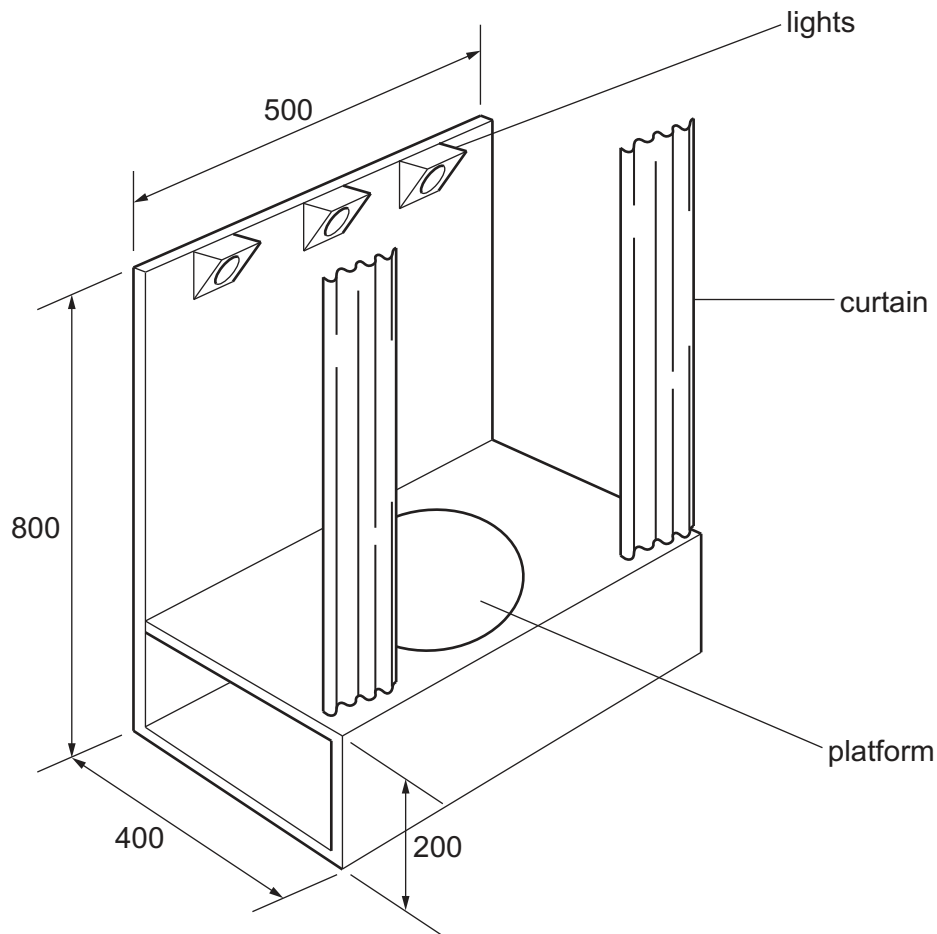


Fig. 9.1

- (a) Use notes and sketches to **develop** a design for a device that will open and close the curtains. The curtains must be able to be stopped at any position. [20]
- (b) Use notes and sketches to **develop** a design for a device that will raise and lower the platform to a height of 50 mm. [20]
- (c) Use notes and sketches to **develop** a design for a lighting control system. The three lights must be different colours, controlled independently and capable of being dimmed. [20]
- (d) Produce a pictorial (3D) rendered drawing of the complete stage set which shows all of the features that you have designed in **parts (a) – (b)**. [20]

BLANK PAGE

Permission to reproduce items where third-party owned material protected by copyright is included has been sought and cleared where possible. Every reasonable effort has been made by the publisher (UCLES) to trace copyright holders, but if any items requiring clearance have unwittingly been included, the publisher will be pleased to make amends at the earliest possible opportunity.

To avoid the issue of disclosure of answer-related information to candidates, all copyright acknowledgements are reproduced online in the Cambridge Assessment International Education Copyright Acknowledgements Booklet. This is produced for each series of examinations and is freely available to download at www.cambridgeinternational.org after the live examination series.

Cambridge Assessment International Education is part of Cambridge Assessment. Cambridge Assessment is the brand name of the University of Cambridge Local Examinations Syndicate (UCLES), which is a department of the University of Cambridge.